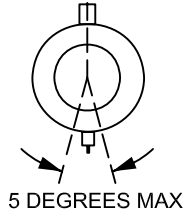
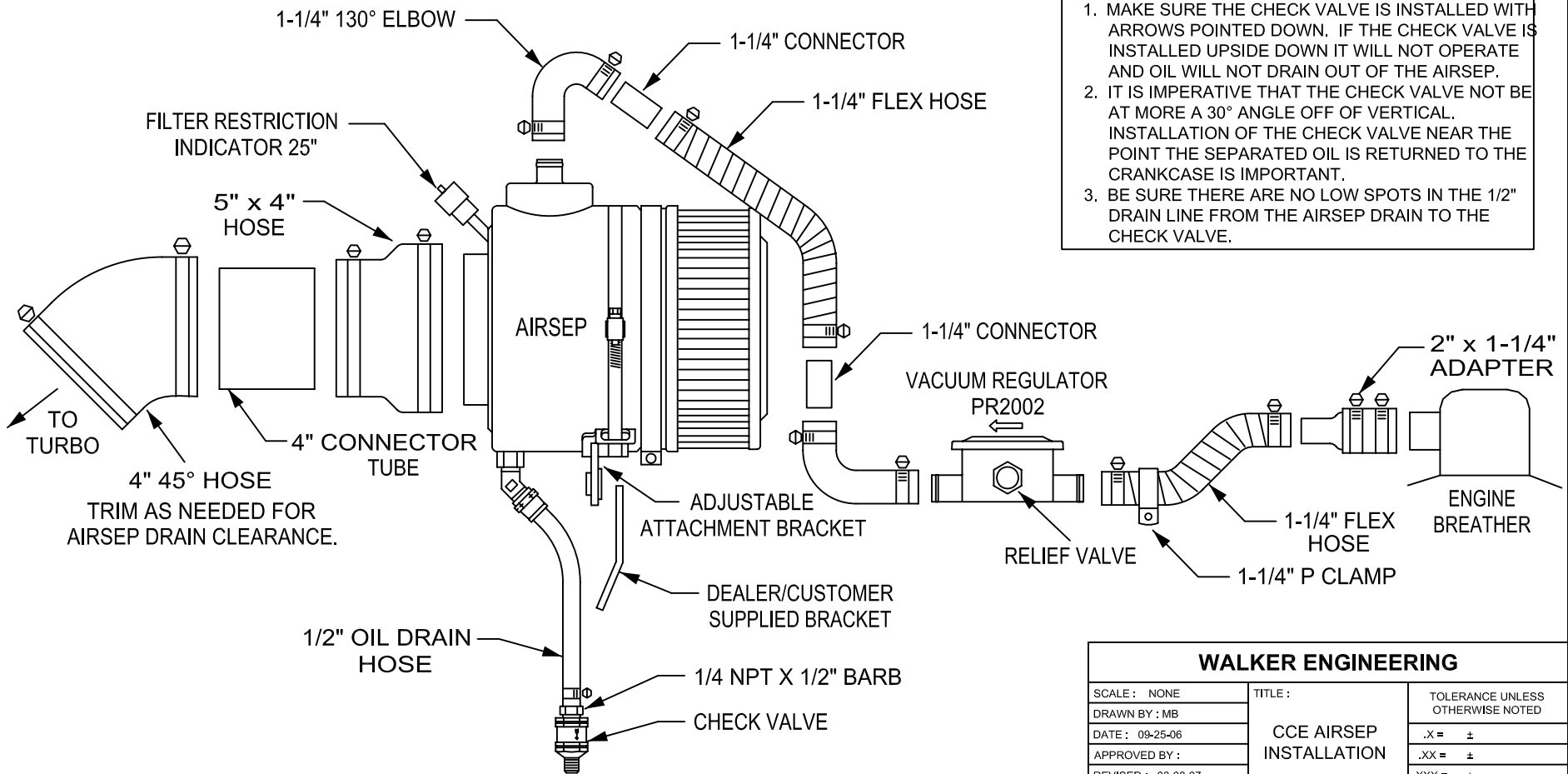


NOTE:
AIR-SEP MUST BE MOUNTED WITH
THE DRAIN AT THE BOTTOM.



- AIRSEP CCE SYSTEM - INSTALLATION INSTRUCTIONS FOR A CATERPILLAR C9 SINGLE TURBO GENSET ENGINE

NOTE: The Vacuum Regulator should be mounted vertically, the vacuum regulator is clearly marked with the direction of flow.



IMPORTANT CHECK VALVE NOTES:

1. MAKE SURE THE CHECK VALVE IS INSTALLED WITH ARROWS POINTED DOWN. IF THE CHECK VALVE IS INSTALLED UPSIDE DOWN IT WILL NOT OPERATE AND OIL WILL NOT DRAIN OUT OF THE AIRSEP.
2. IT IS IMPERATIVE THAT THE CHECK VALVE NOT BE AT MORE A 30° ANGLE OFF OF VERTICAL. INSTALLATION OF THE CHECK VALVE NEAR THE POINT THE SEPARATED OIL IS RETURNED TO THE CRANKCASE IS IMPORTANT.
3. BE SURE THERE ARE NO LOW SPOTS IN THE 1/2" DRAIN LINE FROM THE AIRSEP DRAIN TO THE CHECK VALVE.

WALKER ENGINEERING

SCALE : NONE	TITLE :	TOLERANCE UNLESS OTHERWISE NOTED
DRAWN BY : MB	CCE AIRSEP INSTALLATION	.X = ±
DATE : 09-25-06		.XX = ±
APPROVED BY :		.XXX = ±
REVISED : 03-08-07		DRAWING NO. :
PART NUMBER : KWCCEC9-1		ACD1835